

P2P connection from Web page

Open IE browser, input <http://www.danale.com> in the address bar, you will see the following picture:



Please sign in first, then input your User ID and Password to login, you can Check the device, as is shown in the following picture:

NO	Device Name	SN	Service Type	Service Effective	Service End Time	Operation
1	200L	DHIC4C510FSA10PA52	p2p	2013-12-04	2014-12-04	操作
2	200	89161E25A150C0P52	p2p	2013-12-04	2014-12-04	操作
3	130	CDHHS7C7CL15CF3T52	p2p	2013-11-22	2014-11-22	操作
4	2 MF	LDYS4E516P64HCV52	p2p	2013-10-22	2014-10-22	操作
5	130j	ZHWK6G79EN215MC22	p2p	2013-11-20	2014-11-20	操作
6	130w	VUSK2C30DN7ERNT52	p2p	2013-10-22	2014-10-22	操作
7	200W	S2R10D49N90K34452	p2p	2013-11-27	2014-11-27	操作
8	1.3 MP	A27F7HE10F40PJ252	p2p	2013-11-21	2014-11-21	操作
9	200W	XH4W9A6BK8CJRW52	p2p	2013-11-08	2014-11-08	操作
10	admin	85NM10A10P159LH5012	p2p	2013-11-29	2014-11-29	操作
11	130W	TZESQAGEN70PVT52	p2p	2013-10-12	2014-10-12	操作
12	2 MF	RVD01625A115CDD52	p2p	2013-09-26	2014-09-26	操作
13	PC_84	KR21827CL90KX52	p2p	2013-10-30	2014-10-30	操作

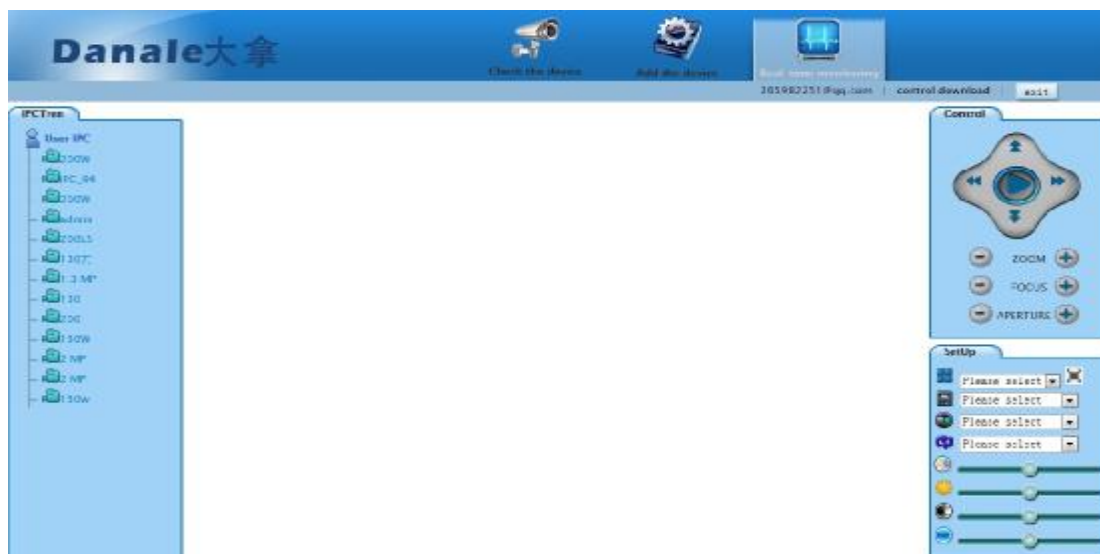
Here you can select Check the device, Add the device and Real-time monitoring.

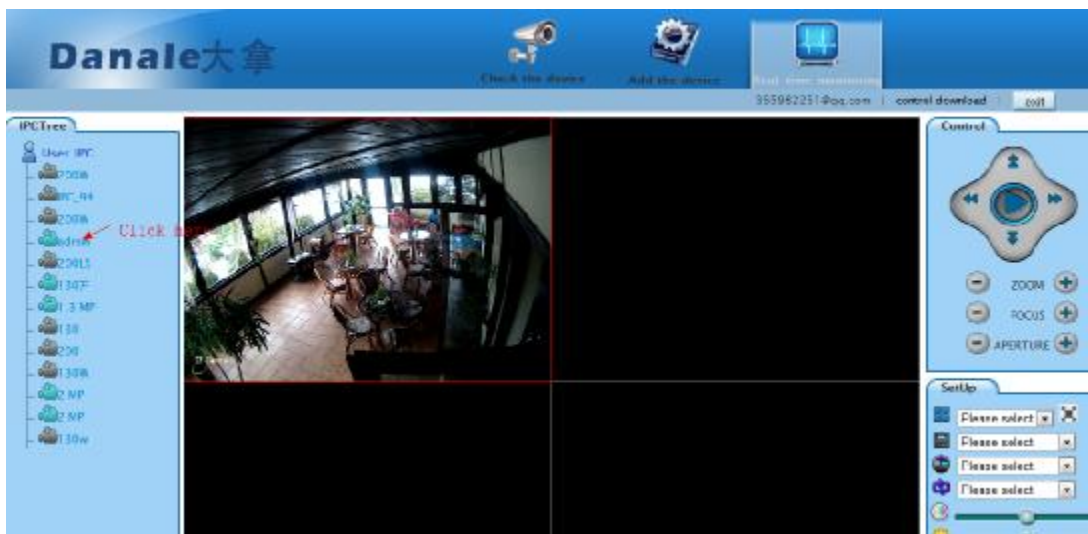
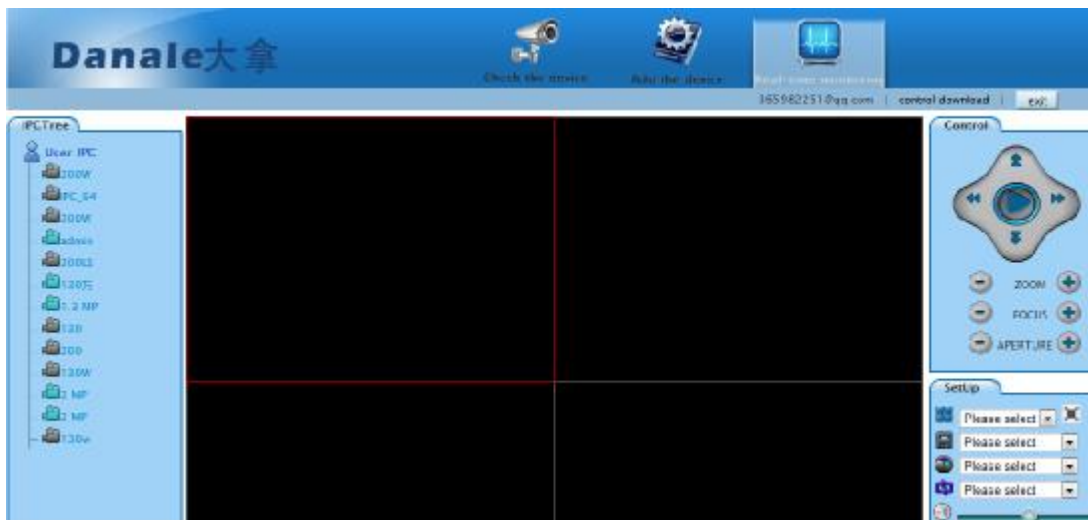
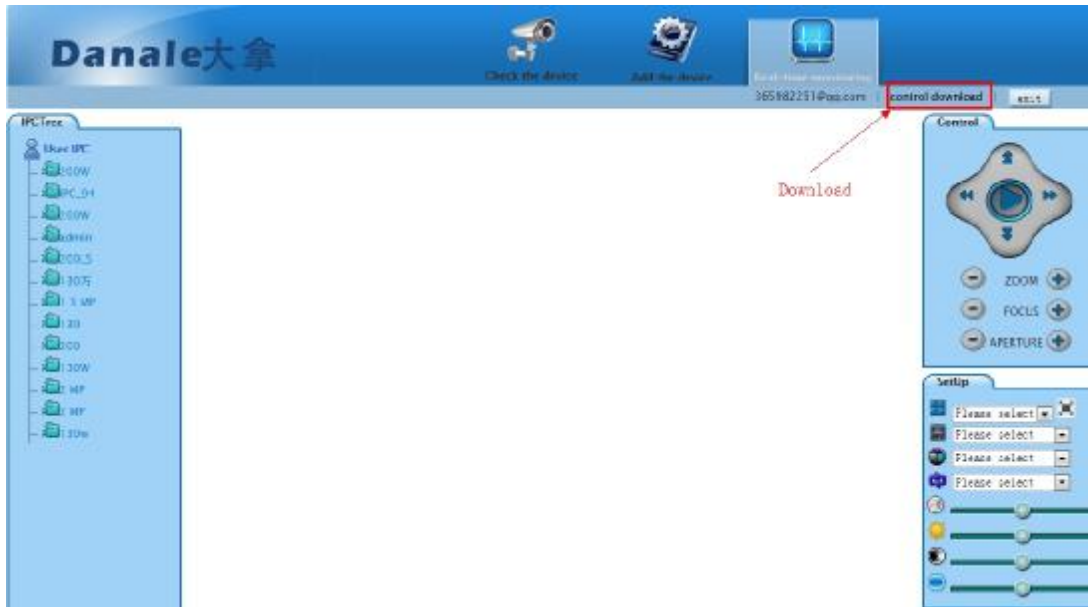
Of course, you must add the device first, click Add the device, then you will see the following picture:



Then edit the device information on the right, edit the DeviceName, DeviceID is the serialnum of the device, and set the DevicePassword , then click Submit to finish .

Click Real-time monitoring to view the images, here please download and install the controls first, then you will see the following picture:





Click the device in the device list on the left to play. You can set the parameters to control the devices on the right.